

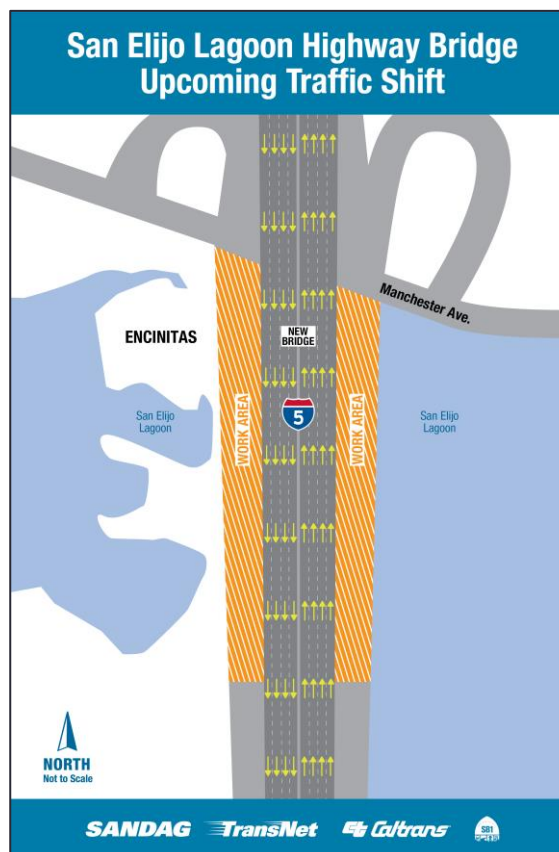
The list below shows planned closures and detours as part of highway, rail, bike, pedestrian, and lagoon improvement projects. Detour signs will be placed, as needed, to assist motorists through closures. Please note, these closures are subject to change.

Please note there will be no closures or construction activity on Thursday, November 11 for the Veterans Day holiday.

Week of November 7

HIGHWAY/BIKE/PEDESTRIAN

- **I-5 Traffic Shift** – The **northbound** traffic shift began **Wednesday, November 3, at 9 p.m.**, and the **southbound** traffic shift will **begin Thursday, November 4, at 9 p.m.** Traffic shifts will occur from 9 p.m. to 5 a.m. Signage will be in place to guide motorists into the inside lanes on the San Elijo Lagoon highway bridge.



- Residents and motorists should expect intermittent nighttime construction noise, lane closures, and ramp closures along **I-5** between **Lomas Santa Fe Drive** in Solana Beach and **Palomar Airport Road** in Carlsbad

from Sunday, November 7, through Wednesday, November 10, from 9 p.m. – 5 a.m. for roadway excavation, roadway restriping, k-rail placement, earthwork hauling and placement, landscape and irrigation, concrete pouring, utility installation, and maintenance.

- Residents and motorists should expect intermittent nighttime construction noise, lane closures, and ramp closures along **Manchester Avenue** at **I-5** and at **Manchester Avenue** and **San Elijo Nature Center** from Sunday, November 7, through Wednesday, November 10, from 7 a.m. – 3 p.m. for placing new roadway base and clearing curb and gutter.
- Residents and businesses should expect intermittent daytime construction noise along **I-5** between **Lomas Santa Fe Drive** in Solana Beach and **Palomar Airport Road** in Carlsbad from Monday, November 8, through Wednesday, November 10, and Friday November 12, from 7 a.m. – 5 p.m. for roadway excavation, roadway paving, earthwork hauling and placement, drainage and electrical infrastructure installation, and embankment construction.
- Residents and motorists should expect intermittent daytime construction noise, flagging operations, and reduced lane widths along **Manchester Avenue** at **I-5** from Monday, November 8, through Wednesday, November 10, and Friday November 12, from 7 a.m. – 5 p.m. for roadway work, roadway excavation, pedestrian bridge foundation and bridge column work, manhole maintenance, and utility installation.

LAGOON

- Residents and businesses along N. Rios Avenue in Solana Beach and Manchester Avenue in Encinitas can expect vehicle traffic as well as general noise and back-up alarms from Monday, November 8, through Wednesday November 10, and Friday November 12, from 7 a.m. – 5 p.m. for transport of equipment, plants, and other materials to and from the San Elijo Lagoon.
- To view current San Elijo Lagoon trail closures please visit thenaturecollective.org/trails. For information on the San Elijo Lagoon Restoration project, please visit thenaturecollective.org/project/san-elijo-lagoon-restoration.

Sign up for project updates at KeepSanDiegoMoving.com/BuildNCC,
or text **BuildNCC** to **313131** to receive construction alerts. For questions, please call **844-NCC-0050**.