



COASTAL RAIL TRAIL

Encinitas City Council
February 25, 2015



PROJECT OVERVIEW

COASTAL RAIL TRAIL

- Three of four segments from the Regional Bike Plan Early Action Program are funded and scheduled for implementation
- Projects 39B, 39C, and 39D





COASTAL RAIL TRAIL SEGMENTS

SEGMENT LOCATIONS

- 39C is the current project and extends from Chesterfield Drive to E Street
- 39B extends from E Street to Leucadia Blvd.
- 39D extends from Solana Beach to Chesterfield Drive
- To ensure connectivity among the segments, concepts for 39B and 39D are being developed now for consideration



STATUS OF CURRENT PROJECT

CONCEPT IN RAIL CORRIDOR

- Project area study, existing conditions, community outreach, City and North County Transit District (NCTD) coordination
- A conceptual design was created for a Class I (separated, shared-use) bike facility in the railroad right-of-way
- Due to issues in the section between Verdi and Cornish, engineering and construction costs were estimated to be very high
- Those issues include: bluff stability, lengthy and tall retaining walls, parking changes, fencing, visual impacts, drainage, and constructability
- As a result we are studying alternatives on Coast Highway



CURRENT EFFORTS

ALTERNATIVES TO THE RAIL CORRIDOR

- Reconfiguring existing City right-of-way on Coast Highway 101
 - Wide buffered lanes
 - Shared-use path along the west side
- Bike boulevard parallel to Coast Hwy through Downtown Encinitas (possibly along 2nd Street between K and D streets)
- On-road enhancements to Vulcan Avenue and San Elijo Drive
 - On Vulcan Ave., depending on available City right-of-way width, facilities could be regular bike lanes (Class II) or protected bike lanes (cycle tracks)
 - San Elijo has less right-of-way than Vulcan, and may only be able to accommodate sharrows



CURRENT EFFORTS

BENEFITS TO ALTERNATIVES

- High quality on-road facilities offer an excellent bike riding environment (comparable to Class I)
- Does not require building a fence in the rail corridor
- Does not change parking along San Elijo Drive
- Avoids other issues such as visual impacts and stormwater drainage problems
- Fits within budget



CURRENT EFFORTS

CONNECTING TO OTHER PROJECTS

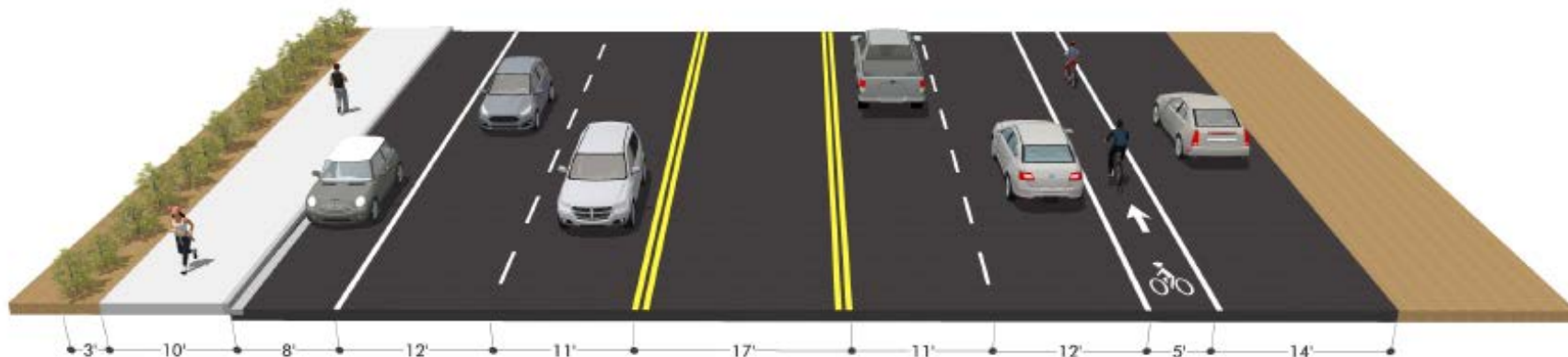
- While looking at the new alternatives for the current project (39C) the team has been examining different ways of connecting to the north and south
- A possible outcome would be for the three projects (39B, 39C, and 39D) to provide a reconfiguration of existing City right-of-way that provides excellent bikeways that are as continuous as possible in facility type



BIKEWAY POSSIBILITIES

EXISTING CONDITIONS

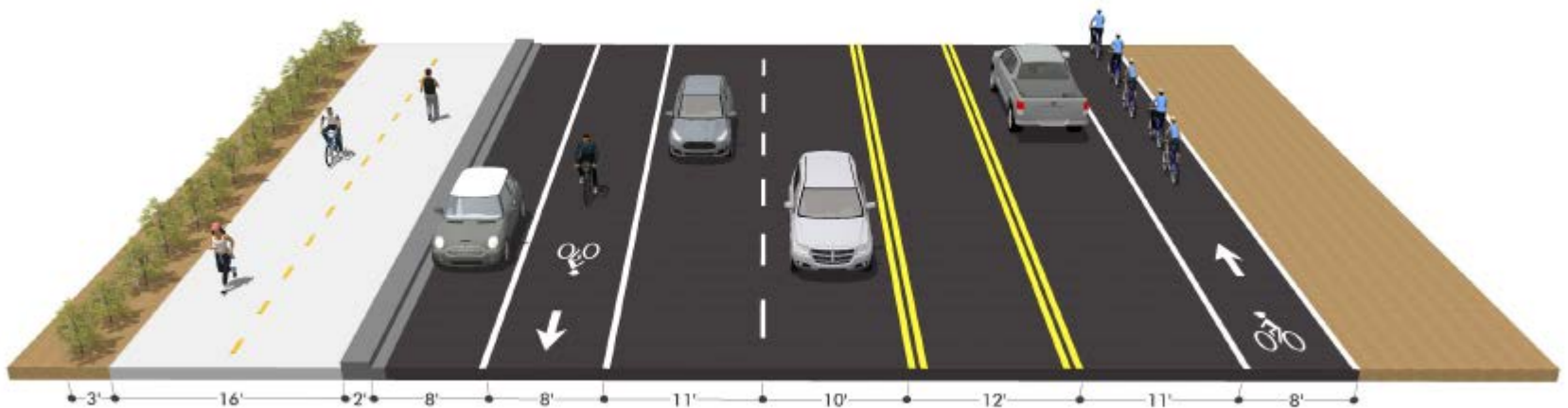
Coast Highway 101- Adjacent to State Park Parking Lot (north of Chesterfield Dr.)





BIKEWAY POSSIBILITIES

CONCEPT OF COAST HIGHWAY RECONFIGURATION

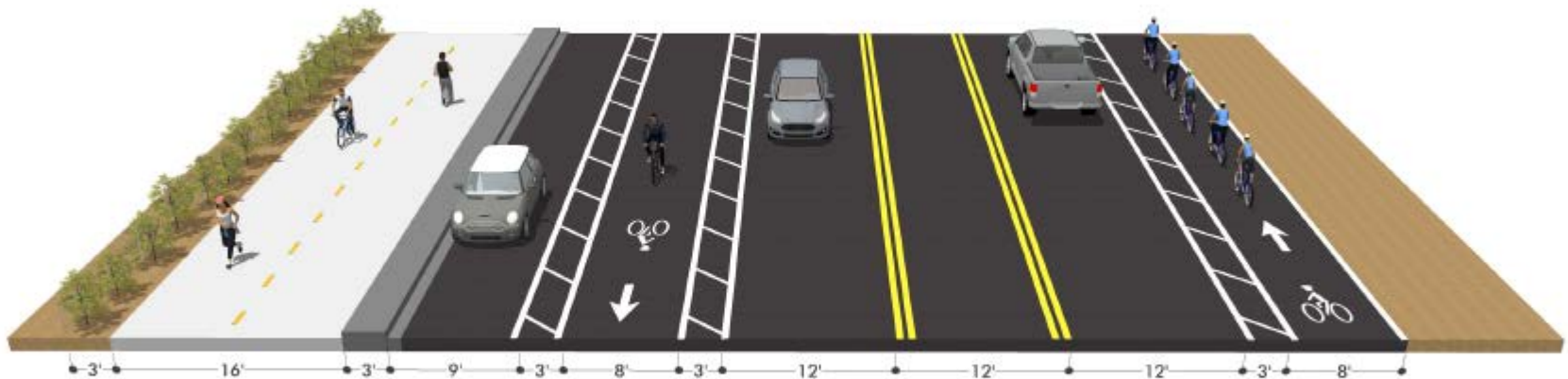


Proposed: Option 1



BIKEWAY POSSIBILITIES

CONCEPT OF COAST HIGHWAY RECONFIGURATION

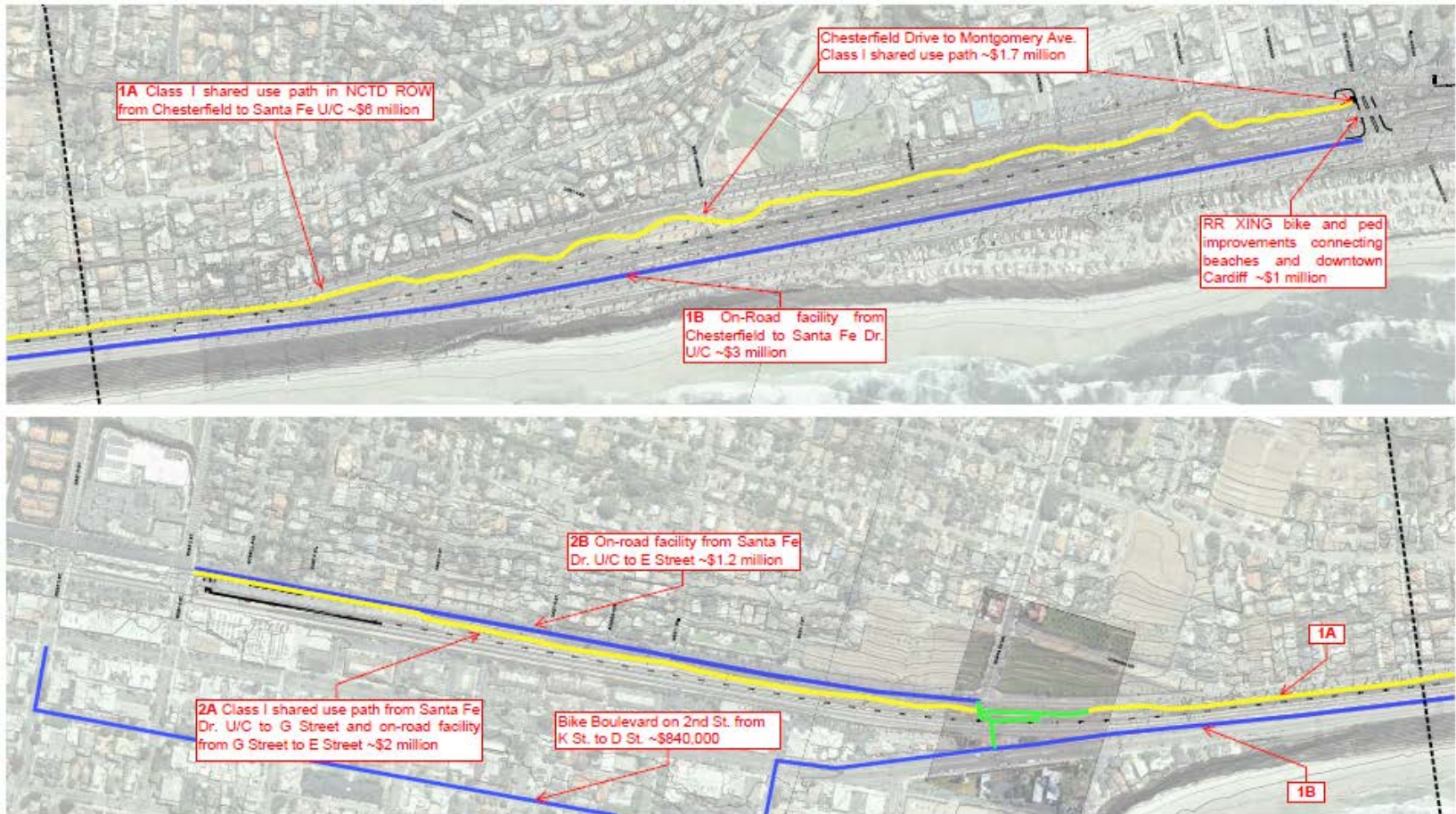


Proposed: Option 2



NEXT STEPS

LOOKING AT THE ALTERNATIVES





UPCOMING COMMUNITY MEETINGS

LATE MARCH OR EARLY APRIL

- An opportunity to look at, discuss, and evaluate all the alternatives
- The goal is to arrive at set of alternatives that provide the best bikeway continuity and fit within the budget
- Follow-up meeting(s) to discuss combination of alternatives to move forward



QUESTIONS?

CONTACT INFORMATION

Chris Carterette, Project Manager
(619) 699-7319
chris.carterette@sandag.org

Website: KeepSanDiegoMoving.com/EncinitasBike