

North County Regional Corridor

I-15/SR 78 MANAGED LANES DIRECT CONNECTORS PROJECT



Project Overview

Continued residential and economic growth along the east-west State Route 78 (SR 78) corridor in the cities of Escondido and San Marcos has placed strain on its connection to and from Interstate 15 (I-15), a major north-south managed Express Lanes system in San Diego County. New direct connectors between the existing I-15 Express Lanes and three miles of new Managed Lanes on SR 78 are intended to improve connectivity and traffic flow on and between the two corridors, increase access to homes and jobs, and improve overall quality of life in north inland San Diego County. Managed Lanes are a tool that help to increase freeway capacity and manage congestion by prioritizing carpool, vanpool and transit, and may allow solo drivers to travel if they are willing to pay a fee, an alternative to traveling in the regular lanes. The I-15 Express Lanes system is a Managed Lanes system.

The interchange improvements are being coordinated alongside the development of a Comprehensive Multimodal Corridor Plan (CMCP) which will look holistically at integrating and improving all modes of transportation in the north inland region, and aid in meeting specific greenhouse gas reduction goals, reducing vehicle trips, and minimizing the overall time people spend in the car.

This project is a partnership with Caltrans, SANDAG, and the City of San Marcos, focused on increasing local access while improving connectivity between the growing economic, educational, medical, and residential hubs in San Diego County.

Project Schedule



Project Details

The I-15/SR 78 Managed Lanes Direct Connectors Project would:

- Build Managed Lanes Direct Connectors between I-15 and SR 78.
- Extend three miles of Managed Lanes in each direction on SR 78, between the interchange and San Marcos Boulevard.
- Add a westbound auxiliary lane between Nordahl Road and Woodland Parkway/Barham Drive.
- Relocate the eastbound SR 78 on-ramp from Barham Drive.
- Widen and realign Barham Drive from La Moree Road to Woodland Parkway.
- Improvements along Rancheros Drive near the westbound off and on-ramps
- Widen the Woodland Parkway undercrossing.
- Construct a bike facility on Barham Drive/Woodland Parkway.

Project Benefits

The I-15/SR 78 Managed Lanes Direct Connectors Project will benefit commuters, residents, and businesses by:

- Providing a reliable transportation option that reduces travel times, encourages multi-occupant vehicle travel, and reduces greenhouse gas emissions
- Improving access to key residential and employment centers
- Supporting state and regional goals to move more people while reducing total number of vehicle miles traveled



Project Status

The I-15/SR 78 Managed Lanes Direct Connectors project is in the early stages of a three-year environmental review process. Caltrans and SANDAG intend to begin a formal public input process input via traditional and virtual engagement opportunities this fall, alongside the release of the Notice of Preparation (NOP). The Draft Environmental Document (DED) is expected to be released for public review and comment in 2023 and a Final Environmental Document is anticipated in 2024.

Please ensure to **sign-up** for project updates to stay up to date on upcoming project milestones and opportunities to provide feedback.



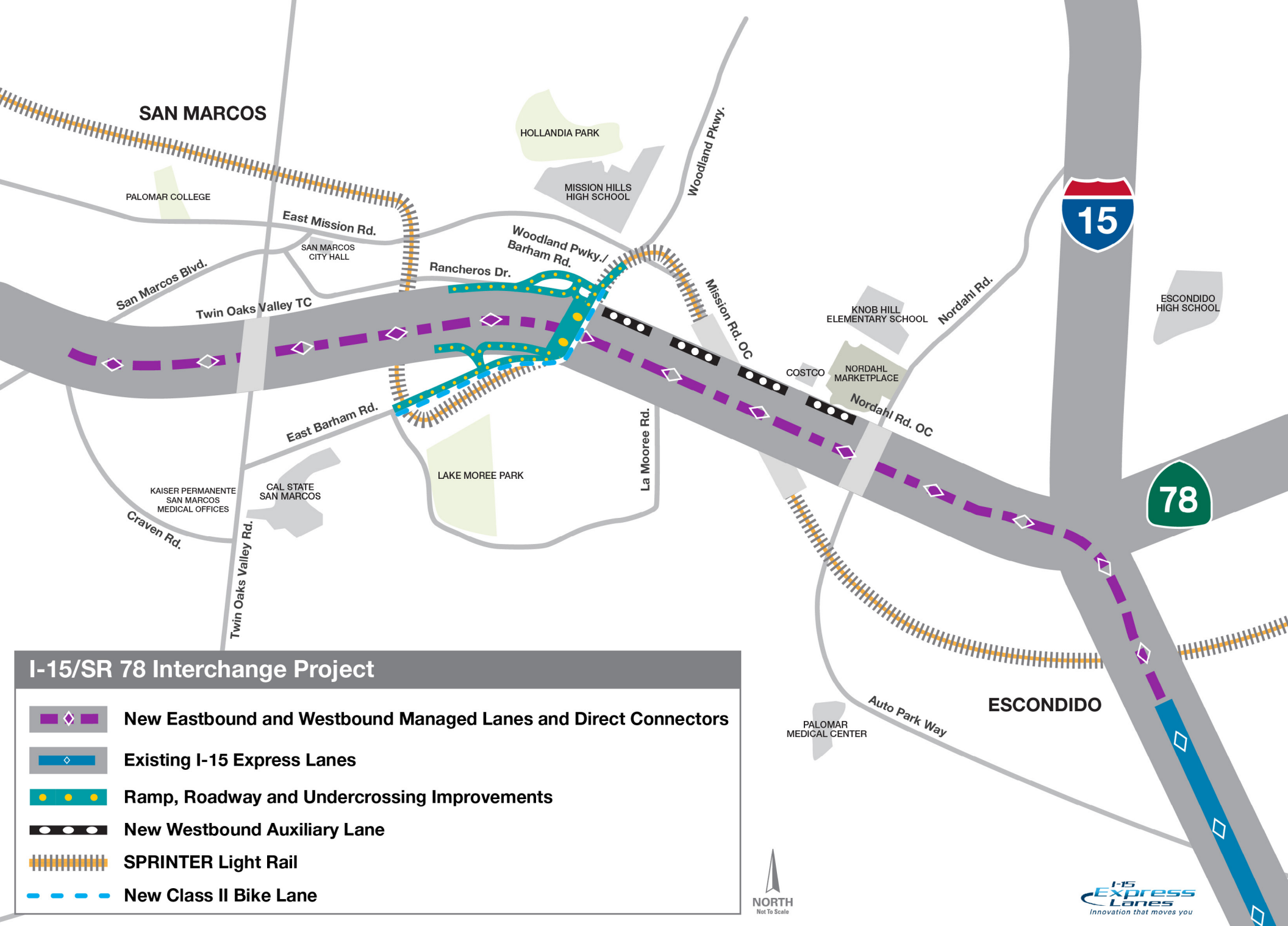
Project Cost

Estimated cost is \$450 million.







FOR MORE INFORMATION

KeepSanDiegoMoving.com/SR78 | (888) 547-1161 | SR78@KeepSanDiegoMoving.com

June 2022



I-15/SR 78 Interchange Project

-  **New Eastbound and Westbound Managed Lanes and Direct Connectors**
-  **Existing I-15 Express Lanes**
-  **Ramp, Roadway and Undercrossing Improvements**
-  **New Westbound Auxiliary Lane**
-  **SPRINTER Light Rail**
-  **New Class II Bike Lane**

