

NIGHTTIME CLOSURES ON LA JOLLA VILLAGE DRIVE

On Sunday, October 9, SANDAG crews will stripe and install signage along La Jolla Village Drive, the southbound I-5 on-ramps, and the southbound I-5 off-ramp.

Intermittent closures will be in place from 9 p.m. to 5 a.m. at the following locations in the below order:

- Southbound I-5 on-ramp from Genesee Avenue and single lanes of southbound I-5 from Genesee Avenue to La Jolla Village Drive
- Southbound I-5 on-ramp from eastbound La Jolla Village Drive
- Southbound I-5 off-ramp to La Jolla Village Drive
- Both directions of La Jolla Village Drive and southbound I-5 on-ramp from westbound La Jolla Village Drive

This work is part of ongoing improvements to help accommodate increased transit activity following the recent completion of the Mid-Coast Extension of the UC San Diego Blue Line.

What to Expect

- Lane closures will be in place overnight on October 9
- Nighttime work hours will be from 9 p.m. to 5 a.m.
- The activities may generate noise; crews will minimize impacts as much as possible

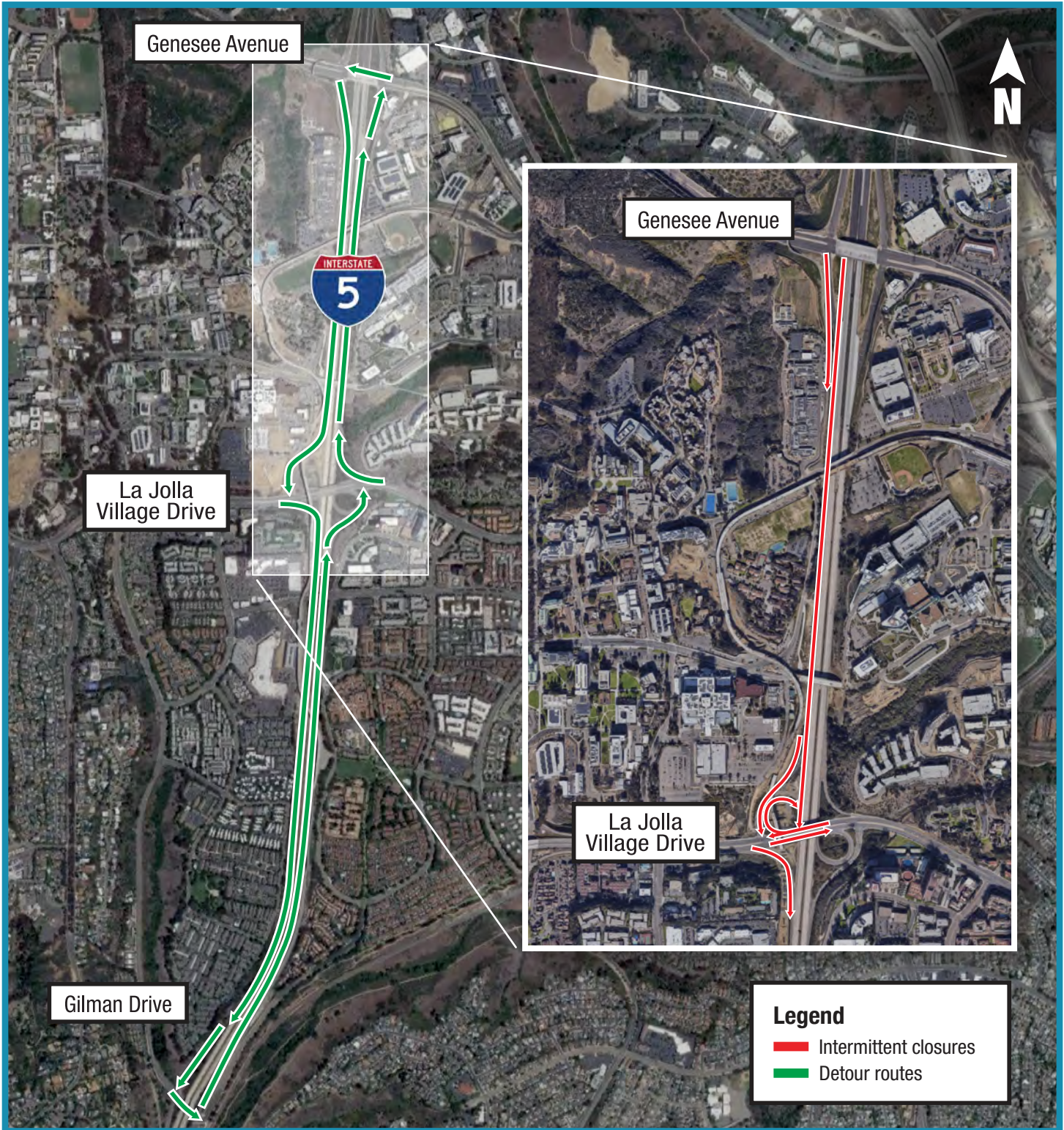
Construction schedules are subject to change.

About the Project

The Mid-Coast Extension of the UC San Diego Blue Line Trolley increases the regional Trolley system by 11 miles—from Downtown San Diego to the University Community—and serves major activity centers such as Mission Bay, the VA Medical Center, UC San Diego, and Westfield UTC. Major construction began in fall 2016 and included nine new Trolley stations. The Mid-Coast Trolley Extension went into service on November 21, 2021.

To be added to our project email list, visit [KeepSanDiegoMoving.com/MidCoastNotices](https://www.KeepSanDiegoMoving.com/MidCoastNotices).

Work Area:



Si desea obtener información en español, por favor comuníquese al (619) 699-1950 o pio@sandag.org.

In compliance with the Americans with Disabilities Act (ADA), this document is available in alternate formats by contacting the SANDAG ADA Coordinator, the Director of Diversity and Equity, at (619) 699-1900 or (619) 699-1904 (TTY).