

**Acquisition Number:** 2  
**Name:** Morrison  
**Acquisition Date:** 1/31/08  
**Location:** San Luis Rey, Unincorporated County  
**Acres:** 136.7

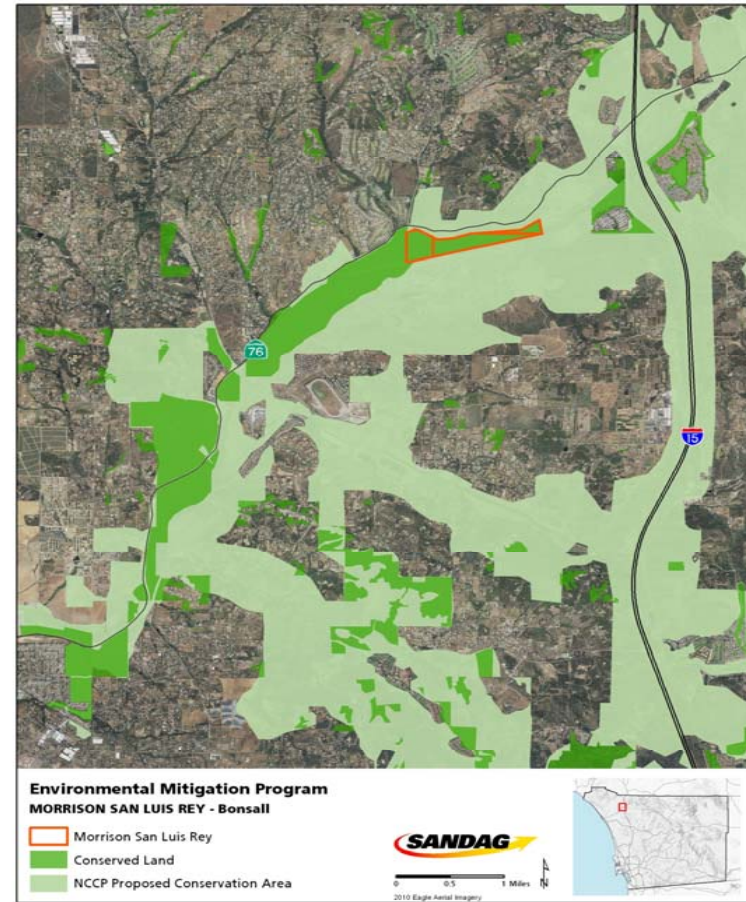
<b>Habitat Types:</b>	<b>Acres:</b>
Fresh Water Marsh	2.8
Riparian Woodland	51
Riparian Scrub	74
Disturbed Habitat	3.6
Non-native Grasslands	5.3

<b>2030 RTP Project Mitigation:</b>	<b>Type:</b>	<b>Acres:</b>
SR 76 (Melrose to Mission)	Wetlands	136.7

**Ownership:** Caltrans  
**Management:** Caltrans  
**Conservation Easement to SANDAG:** No  
**Native Habitat Restoration Proposed:** Yes



Morrison Property, San Luis Rey



NCCP = Natural Community Conservation Planning (Program)