

State Route 78 Nordahl Road Bridge

July 2012

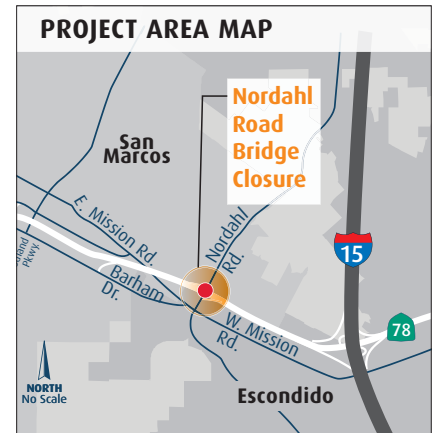
Construction Advisory: Closure of Bridge and SR 78 Ramps Weekend of July 20th

From Friday night, July 20, 2012 through Monday morning, July 23, 2012 work on the Nordahl Road Bridge will require intermittent closures of the bridge and ramps at the SR 78 and Nordahl Road interchange. This work will raise the height of the ramps to match the new bridge's height and to accommodate the future widening of SR 78. After the weekend closures, extra lanes will be opened at the SR 78 off ramps and all Nordahl Road traffic will be switched to the east side of the bridge so that its west side can be constructed. Motorists are urged to avoid the area if possible. Nordahl Road detours shown below are:

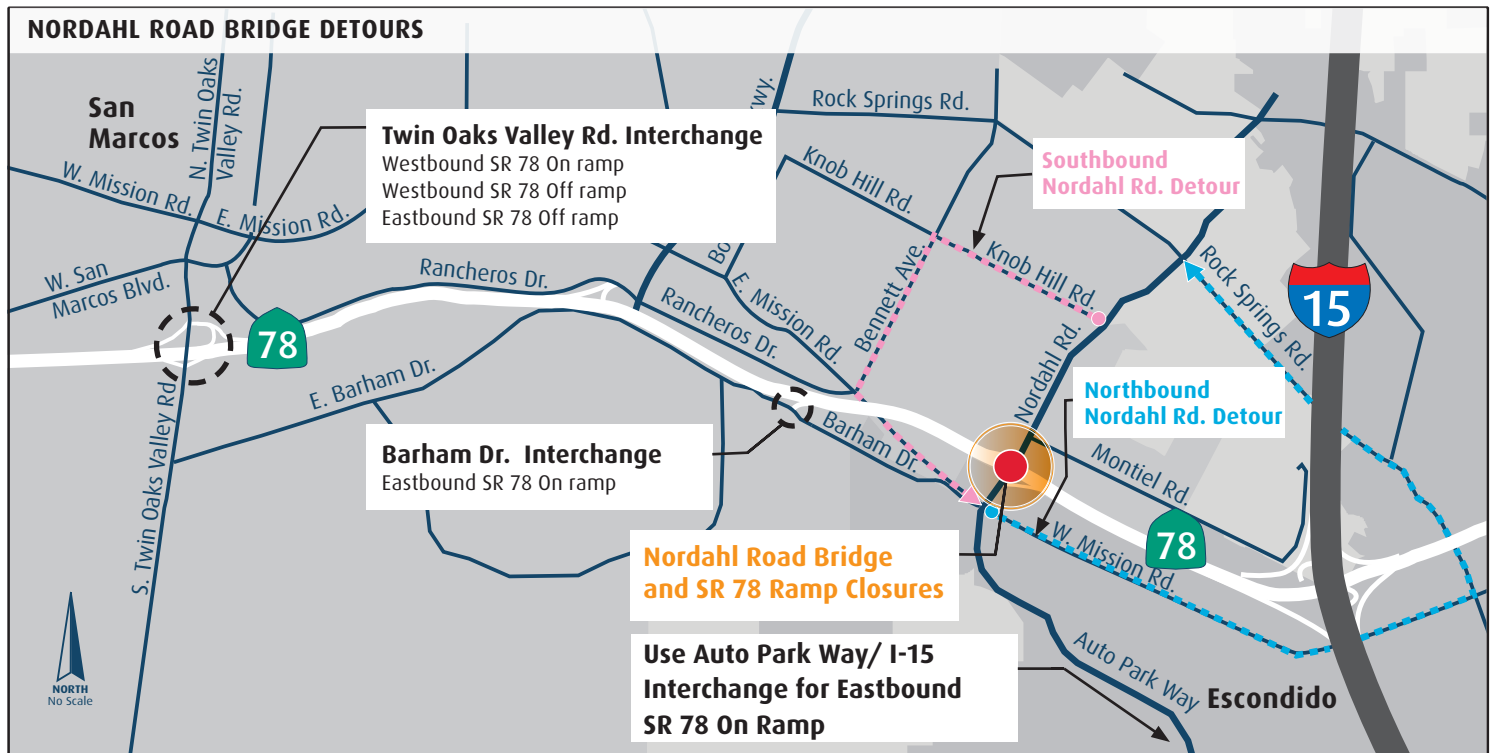
- ▶ For northbound travel towards Nordahl Road Bridge, motorists will be detoured east on West Mission Road, then north on to Rock Springs Road. [See blue route.](#)
- ▶ For southbound travel towards Nordahl Road Bridge, motorists will be detoured west on Knob Hill Road, then south on Bennett Avenue on to East Mission Road. [See pink route.](#)

Ramp detours for SR 78 at Nordahl Road will also be in effect throughout the weekend. Signage will direct motorists through detours to other nearby interchanges. Pedestrian access will be maintained through the weekend via a temporary pedestrian bridge. Area residents and businesses are advised that heavy machinery will cause daytime and nighttime noise.

For more information, please call (858) 668-3368 or visit KeepSanDiegoMoving.com.



**Nordahl Road Bridge
Replacement Construction
Schedule:**
February 2012 - Fall 2012



ADVISORY

7