

State Route 78 Nordahl Road Bridge

April 2012

Construction Advisory: Demolition Update for East Side of Nordahl Road Bridge

Please be advised that demolition work on the east side of Nordahl Road Bridge (shown in red in the diagram below) is anticipated to continue early next week.

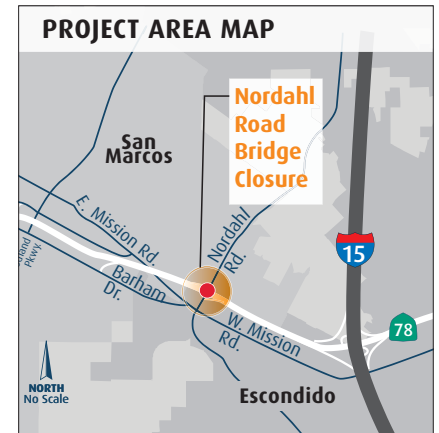
Please be advised that full freeway closures will be needed throughout the project for a variety of construction activities, including the current demolition.

Motorists are urged to avoid the area if possible. The freeway detours will have motorists exit SR 78 at the Nordahl Road off ramp and re-enter SR 78 at the Nordahl Road on ramp. Also, traffic delays at this location and road closures on Nordahl Road Bridge's northbound through lanes are expected during the demolition. Signage will be in place to direct motorists through any closures on Nordahl Road.

The bridge's temporary pedestrian bridge will continue to remain open during the demolition.

The schedule for this freeway closure is subject to weather delays, as well as the availability of the heavy construction machinery that will be used to remove the east side of the bridge's structure. Residents and businesses in the area are also advised that this machinery will cause noise in the area during the demolition.

If you have questions, please call our Public Information Office or visit our project web pages at **KeepSanDiegoMoving.com** where information about this project and the improvements to SR 78 is provided.



SR 78 Projects Schedule

Westbound SR 78 Widening Construction Schedule:

July 2011 - Spring 2012

Eastbound SR 78 Widening Construction Schedule:

January 2012 - Winter 2012/2013

Nordahl Road Bridge Replacement Construction Schedule:

February 2012 - Fall 2012

Stay Informed

For more information, log-on to the website:

KeepSanDiegoMoving.com

Follow us:

[Twitter.com/SDCaltrans](https://twitter.com/SDCaltrans)

[Facebook.com/SANDAGregion](https://facebook.com/SANDAGregion)

For questions, call Caltrans Public Affairs:

(858) 668-3368

