

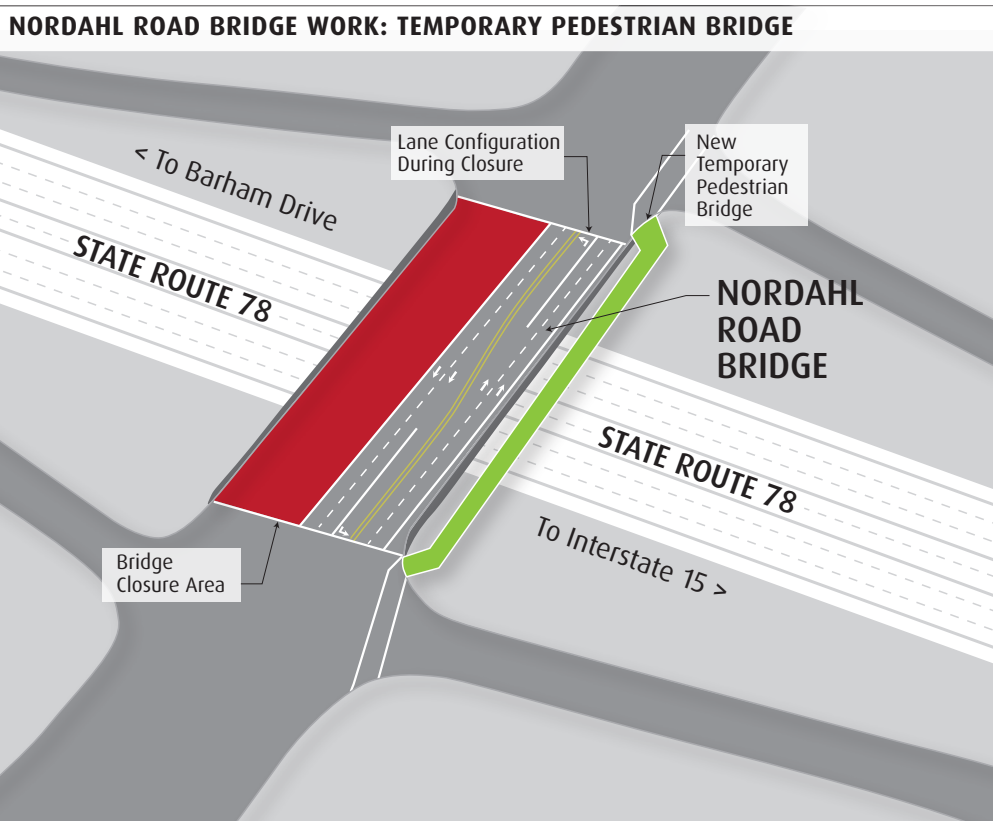
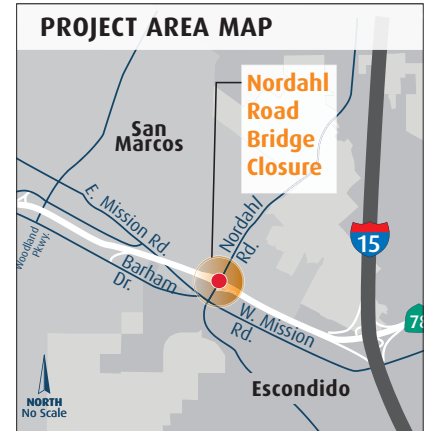
# State Route 78 Nordahl Road Bridge

July 2012

## Construction Advisory: Pedestrians Shifted to East Side of Nordahl Road Bridge

Pedestrians are advised that beginning the night of Saturday, July 21, 2012, the temporary pedestrian bridge on the west side of Nordahl Road Bridge will be relocated to its east side (shown in green below). This temporary bridge will be the pedestrian pathway on Nordahl Road over the SR 78 while the west side of the bridge is under construction. Signs will be in place to direct pedestrians to this temporary bridge.

Construction of the Nordahl Road Bridge Replacement began in late February. The first phase of work reconstructed the east side of the bridge. The second phase of construction will begin the weekend of July 20, 2012 and will rebuild the west side of the bridge (shown in red in the diagram). This phase of work will require intermittent bridge and ramp closures at the SR 78 and Nordahl Road interchange beginning Friday night, July 20, 2012 through Monday morning, July 23, 2012.



## SR 78 Projects Schedule

**Westbound SR 78 Widening Construction Schedule:**  
July 2011 - Spring 2012

**Eastbound SR 78 Widening Construction Schedule:**  
January 2012 - Winter 2012/2013

**Nordahl Road Bridge Replacement Construction Schedule:**  
February 2012 - Fall 2012

## Stay Informed

**For more information:**  
[KeepSanDiegoMoving.com](http://KeepSanDiegoMoving.com)

**I-15 Public Information Office:**  
(858) 668-3368

**Follow us:**  
[Twitter.com/SDCaltrans](https://twitter.com/SDCaltrans)  
[Facebook.com/SANDAGregion](https://facebook.com/SANDAGregion)

The Nordahl Road Bridge Replacement is one of three projects in the area. Working collaboratively, the Cities of San Marcos and Escondido, the San Diego Association of Governments, and Caltrans are investing \$41.1 million in three projects near the I-15/SR 78 to address the severe congestion in this project area and to prepare the SR 78 for future carpool lanes.



ADVISORY

6