

State Route 78 Eastbound Auxiliary Lanes

January 2013

Construction Advisory #11 Nighttime Freeway Closures on SR 78

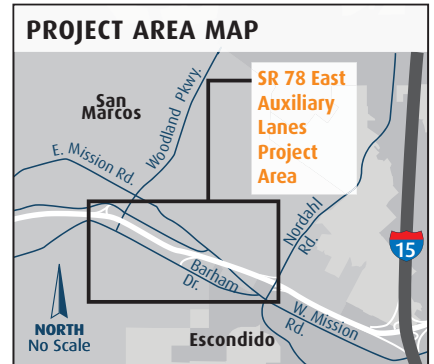
Please be advised that for approximately eight weeks, beginning January 21, work on the SR 78 between Nordahl Road and Twin Oaks Valley Road will require intermittent nighttime freeway closures from 11:30 p.m. to 5:00 a.m. These nighttime closures will allow crews to rehabilitate a portion of the SR 78 over Mission Road and finish constructing the eastbound auxiliary lanes.

During these closures, motorists are urged to avoid the area if possible. Traffic delays are expected during construction. Signs will be in place to direct motorists through detours.

Eastbound SR 78 Detour: Please see **green** route in map below.

Westbound SR 78 Detour: Please see **pink** route in map below.

Residents and businesses in the area are also advised that heavy machinery will cause nighttime noise in the area during construction. The schedule for this freeway closure is subject to weather delays.



Stay Informed

For more information:
KeepSanDiegoMoving.com

I-15 Public Information Office:
 (858) 668-3368

Follow us:
[Twitter.com/SDCaltrans](https://twitter.com/SDCaltrans)
[Twitter.com/SANDAG](https://twitter.com/SANDAG)
[Facebook.com/SANDAGregion](https://facebook.com/SANDAGregion)

