

State Route 78 Eastbound Auxiliary Lanes

Construction Advisory #12

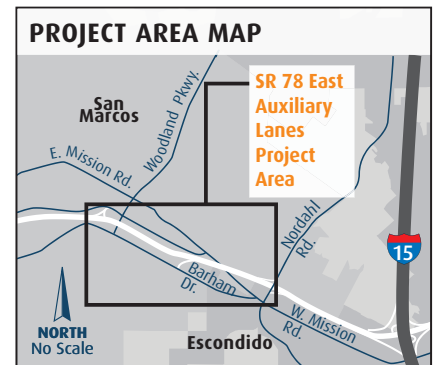
Weekend Closure of Eastbound SR 78 On Ramp at Barham Drive

Please be advised that from Friday, February 22, 2013 at 9 p.m. through Monday, February 25, 2013 at 5 a.m., work on the eastbound SR 78 on ramp at Barham Drive will require a full ramp closure. This weekend closure will allow crews to reconstruct the current on ramp as part of the Eastbound Auxiliary Lanes Project.

During this closure, motorists are urged to avoid the area if possible. Traffic delays are expected during construction. Signs will be in place to direct motorists through detours.

Eastbound SR 78 On Ramp Detours at Barham Drive: Please see **green** and **pink** routes in map below.

Residents and businesses in the area are also advised that heavy machinery will cause nighttime noise during construction. This on ramp closure could be delayed to the next available weekend in the case of rain.



Stay Informed

For more information:
KeepSanDiegoMoving.com

I-15 Public Information Office:
(858) 668-3368

Follow us:
[Twitter.com/SDCaltrans](https://twitter.com/SDCaltrans)
[Twitter.com/SANDAG](https://twitter.com/SANDAG)
[Facebook.com/SANDAGregion](https://facebook.com/SANDAGregion)

